

# FABRICS

COLLECTION



**casala**

## Quality fabrics united for stylish interior concepts

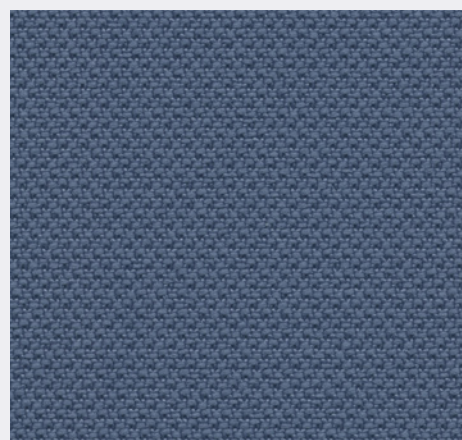
Casala fabrics combine a harmonious blend of colours and patterns ensuring they both complement and integrate effortlessly with each interior concept for professional and public spaces. In today's world, the choice of materials is not just about design and functionality, but also about the broader impact on our environment. Our fabric collection includes several fabrics made from recycled content. We are continuously looking for innovative and sustainable materials while maintaining commitment to quality, sustainability and our philosophy "Design Linked to Functionality".



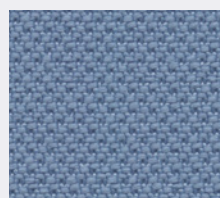
**casala**

# ARIZONA

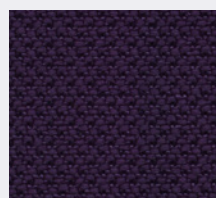
FABRIC BAND 1



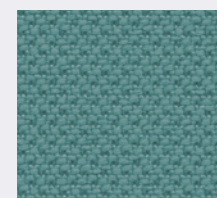
16026



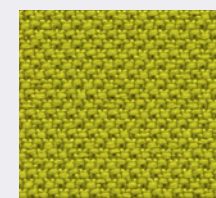
16005



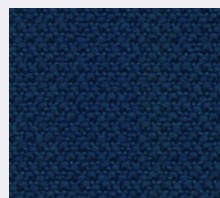
15004



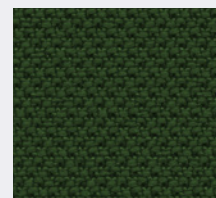
17026



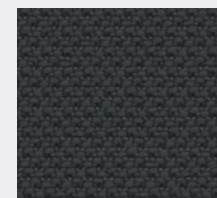
17011



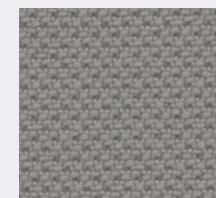
16080



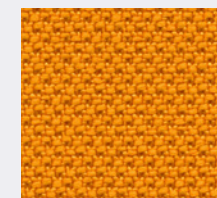
17029



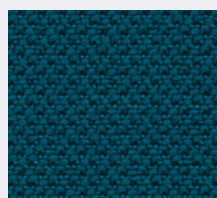
18003



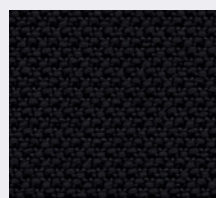
18078



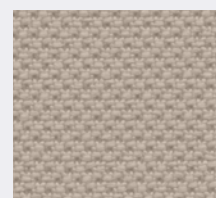
13005



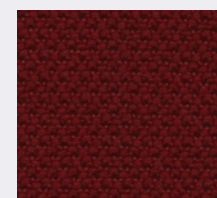
16031



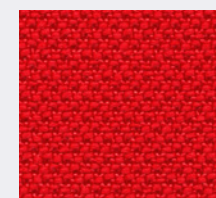
18033



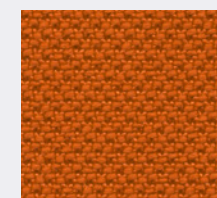
11006



14007



14027



14030

## SPECIFICATIONS

**UK MATERIAL**  
100% POLYESTER

**WEIGHT / WIDTH**  
APPROX. 320 G/M<sup>2</sup> / APPROX. 140 CM

**ABRASION RESISTANCE**  
100.000 MARTINDALE (ISO 12947/2)

**FLAME RETARDENCY**  
CRIB 5 / EN 1021/1-2  
BS 7176 MEDIUM HAZARD  
NF D 60013 CLASS AM 18  
CALIFORNIA TB117:2013

**FASTNESS TO LIGHT**  
6 (ISO 105-B02)

**FASTNESS TO RUBBING / PILLING**  
4-5 (ISO 105-X12) / 5 (ISO 12945-2)

**NL MATERIAAL**  
100% POLYESTER

**GEWICHT / BREEDTE**  
CA. 320 G/M<sup>2</sup> / CA. 140 CM

**SLIJTWEERSTAND**  
100.000 MARTINDALE (ISO 12947/2)

**BRANDVEILIGHEID**  
CRIB 5 / EN 1021/1-2  
BS 7176 MEDIUM HAZARD  
NF D 60013 CLASS AM 18  
CALIFORNIA TB117:2013

**LICHTECHTHEID**  
6 (ISO 105-B02)

**WRIJFECHTHEID / PILLING**  
4-5 (ISO 105-X12) / 5 (ISO 12945-2)

**DE MATERIAL**  
100% POLYESTER

**GEWICHT / BREITE**  
CA. 320 G/M<sup>2</sup> / CA. 140 CM

**SCHEUERFESTIGKEIT**  
100.000 MARTINDALE (ISO 12947/2)

**BRANDVERHALTEN**  
CRIB 5 / EN 1021/1-2  
BS 7176 MEDIUM HAZARD  
NF D 60013 CLASS AM 18  
CALIFORNIA TB117:2013

**LICHTECHTHEIT**  
6 (ISO 105-B02)

**REIBECHTHEID / PILLING**  
4-5 (ISO 105-X12) / 5 (ISO 12945-2)

**FR MATÉRIAU**  
100% POLYESTER

**POIDS / LARGEUR**  
CA. 320 G/M<sup>2</sup> / CA. 140 CM

**SOLIDITÉ À LA LUMIÈRE**  
100.000 MARTINDALE (ISO 12947/2)

**NON FEU**  
CRIB 5 / EN 1021/1-2  
BS 7176 MEDIUM HAZARD  
NF D 60013 CLASS AM 18  
CALIFORNIA TB117:2013

**SOLIDITÉ LUMIÈRE**  
6 (ISO 105-B02)

**RÉSISTANCE AU FROTTEMENT / PILING**  
4-5 (ISO 105-X12) / 5 (ISO 12945-2)

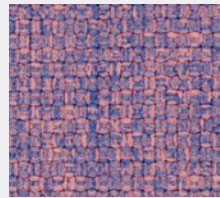
## SAMPLE SERVICE

The colours in this publication may differ to the original product. We recommend requesting a product sample.

Sample service and further information:  
[www.casala.com/samples](http://www.casala.com/samples)

# FLORIDA

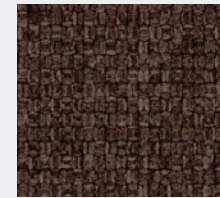
(100% POLYESTER, GRS RECYCLED) FABRIC BAND 2



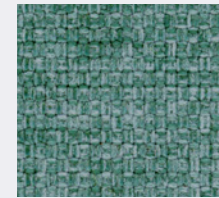
26018



21020



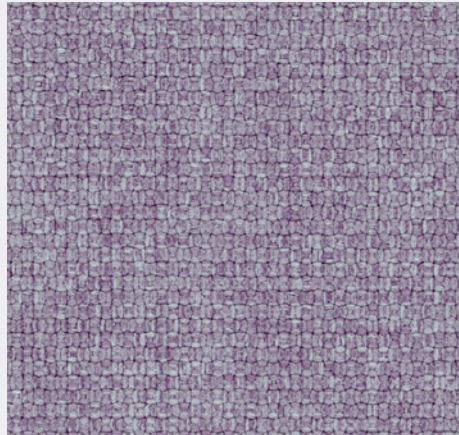
22005



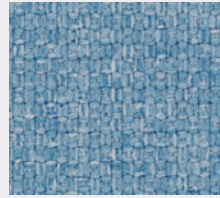
27008



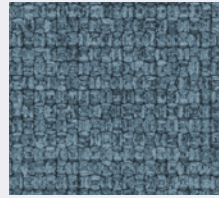
28048



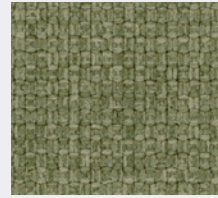
26091



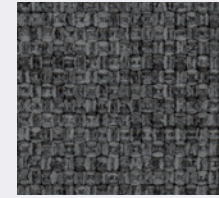
26070



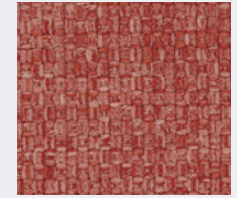
26031



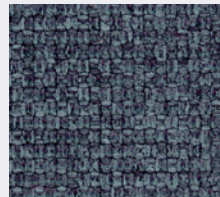
27019



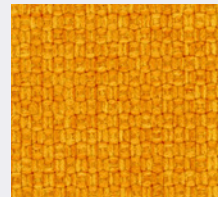
28006



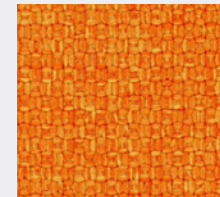
24079



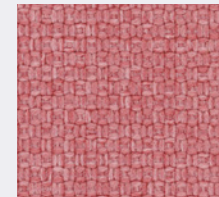
26034



23090



23094



24022



24021

## SPECIFICATIONS

**UK MATERIAL**  
100% POLYESTER, GRS 2020-138 RECYCLED

**WEIGHT / WIDTH**  
APPROX. 350 G/M<sup>2</sup> / APPROX. 140 CM

**ABRASION RESISTANCE**  
100.000 MARTINDALE (ISO 12947/2)

**FLAME RETARDENCY**  
1 IM (UNI 9175) / BS 7176  
CALIFORNIA TB 117 /  
CRIB 5 (BS 5852 PART II)  
EN 1021-1&2 / IMO PART 8

**FASTNESS TO LIGHT**  
6 (ISO 105-B02)

**FASTNESS TO RUBBING / PILLING**  
4-5 (ISO 105-X12) / 5 (ISO 12945-2)

**NL MATERIAAL**  
100% POLYESTER, GRS 2020-138 GERECYCLED

**GEWICHT / BREEDTE**  
CA. 350 G/M<sup>2</sup> / CA. 140 CM

**SLIJTWEERSTAND**  
100.000 MARTINDALE (ISO 12947/2)

**BRANDVEILIGHEID**  
1 IM (UNI 9175) / BS 7176  
CALIFORNIA TB 117 /  
CRIB 5 (BS 5852 PART II)  
EN 1021-1&2 / IMO PART 8

**LICHTECHTHEID**  
6 (ISO 105-B02)

**WRIJFECHTHEID / PILLING**  
4-5 (ISO 105-X12) / 5 (ISO 12945-2)

**DE MATERIAL**  
100% POLYESTER, GRS 2020-138 RECYCLED

**GEWICHT / BREITE**  
CA. 350 G/M<sup>2</sup> / CA. 140 CM

**SCHEUERFESTIGKEIT**  
100.000 MARTINDALE (ISO 12947/2)

**BRANDVERHALTEN**  
1 IM (UNI 9175) / BS 7176  
CALIFORNIA TB 117 /  
CRIB 5 (BS 5852 PART II)  
EN 1021-1&2 / IMO PART 8

**LICHTECHTHEIT**  
6 (ISO 105-B02)

**REIBECHTHEID / PILLING**  
4-5 (ISO 105-X12) / 5 (ISO 12945-2)

**FR MATÉRIAU**  
100% POLYESTER, GRS 2020-138 RECYCLÉ

**POIDS / LARGEUR**  
CA. 350 G/M<sup>2</sup> / CA. 140 CM

**SOLIDITÉ À LA LUMIÈRE**  
100.000 MARTINDALE (ISO 12947/2)

**NON FEU**  
1 IM (UNI 9175) / BS 7176  
CALIFORNIA TB 117 /  
CRIB 5 (BS 5852 PART II)  
EN 1021-1&2 / IMO PART 8

**SOLIDITÉ LUMIÈRE**  
6 (ISO 105-B02)

**RÉSISTANCE AU FROTTEMENT / PILING**  
4-5 (ISO 105-X12) / 5 (ISO 12945-2)

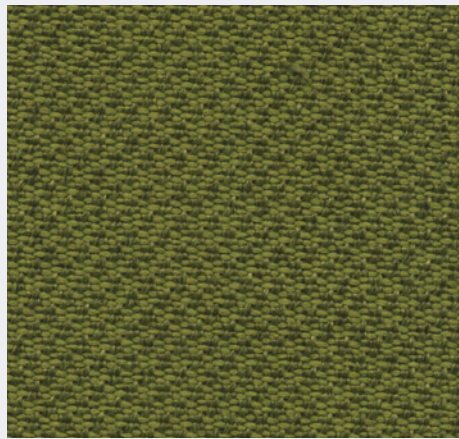
## SAMPLE SERVICE

The colours in this publication may differ to the original product. We recommend requesting a product sample.

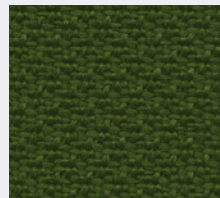
Sample service and further information:  
[www.casala.com/samples](http://www.casala.com/samples)

# CALIFORNIA

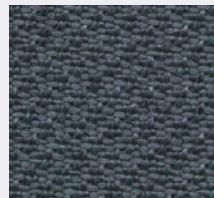
(100% RECYCLED POLYESTER) FABRIC BAND 3



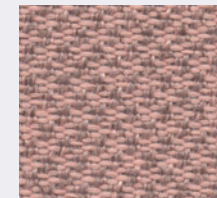
37521



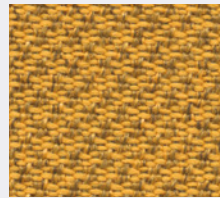
37029



38517



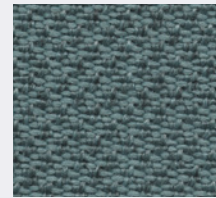
34522



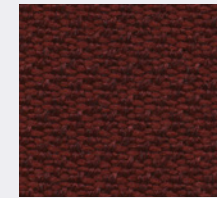
33509



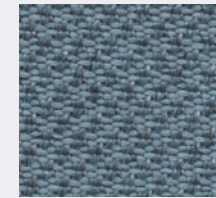
38532



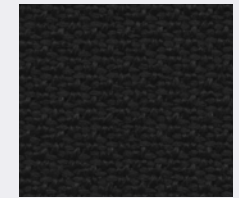
37504



34503



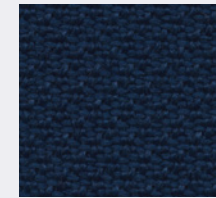
36524



38033



31506



36080

## SPECIFICATIONS

### UK MATERIAL

100% RECYCLED POLYESTER  
SEAQUAL® CERTIFIED

WEIGHT / WIDTH  
APPROX. 330 G/M<sup>2</sup> / APPROX. 140 CM

ABRASION RESISTANCE  
100.000 MARTINDALE (ISO 12947/2)

FLAME RETARDENCY  
1 IM (UNI 9175)  
CALIFORNIA TB 117  
EN 1021-1&2  
IMO PART 8 / BS 7176 MEDIUM HAZARD

FASTNESS TO LIGHT  
6 (ISO 105-B02)

FASTNESS TO RUBBING / PILLING  
4-5 (ISO 105-X12) / 5 (ISO 12945-2)

### NL MATERIAAL

100% RECYCLED POLYESTER  
SEAQUAL® CERTIFIED

GEWICHT / BREEDTE  
CA. 330 G/M<sup>2</sup> / CA. 140 CM

SLIJTWEERSTAND  
100.000 MARTINDALE (ISO 12947/2)

BRANDVEILIGHEID  
1 IM (UNI 9175)  
CALIFORNIA TB 117  
EN 1021-1&2  
IMO PART 8 / BS 7176 MEDIUM HAZARD

LICHTECHTHEID  
6 (ISO 105-B02)

WRIJFECHTHEID / PILLING  
4-5 (ISO 105-X12) / 5 (ISO 12945-2)

### DE MATERIAL

100% RECYCLED POLYESTER  
SEAQUAL® CERTIFIED

GEWICHT / BREITE  
CA. 330 G/M<sup>2</sup> / CA. 140 CM

SCHEUERFESTIGKEIT  
100.000 MARTINDALE (ISO 12947/2)

BRANDVERHALTEN  
1 IM (UNI 9175)  
CALIFORNIA TB 117  
EN 1021-1&2  
IMO PART 8 / BS 7176 MEDIUM HAZARD

LICHTECHTHEIT  
6 (ISO 105-B02)

REIBECHTHEID / PILLING  
4-5 (ISO 105-X12) / 5 (ISO 12945-2)

### FR MATÉRIAU

100% RECYCLED POLYESTER  
SEAQUAL® CERTIFIED

POIDS / LARGEUR  
CA. 330 G/M<sup>2</sup> / CA. 140 CM

SOLIDITÉ À LA LUMIÈRE  
100.000 MARTINDALE (ISO 12947/2)

NON FEU  
1 IM (UNI 9175)  
CALIFORNIA TB 117  
EN 1021-1&2  
IMO PART 8 / BS 7176 MEDIUM HAZARD

SOLIDITÉ LUMIÈRE  
6 (ISO 105-B02)

RÉSISTANCE AU FROTTEMENT / PILING  
4-5 (ISO 105-X12) / 5 (ISO 12945-2)

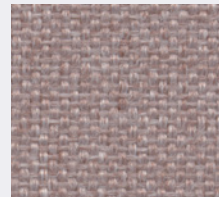
## SAMPLE SERVICE

The colours in this publication may differ to the original product. We recommend requesting a product sample.

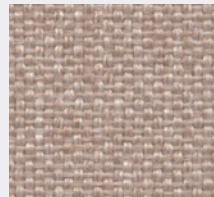
Sample service and further information:  
[www.casala.com/samples](http://www.casala.com/samples)

# DAKOTA

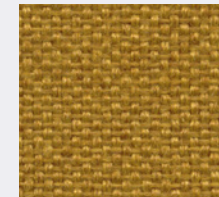
FABRIC BAND 3



31033



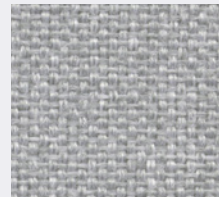
31008



33030



31025



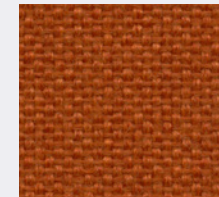
38032



38006



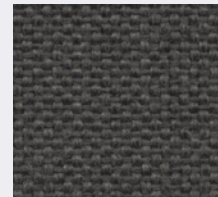
34029



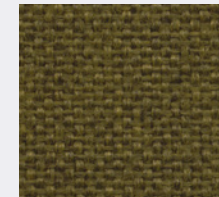
33082



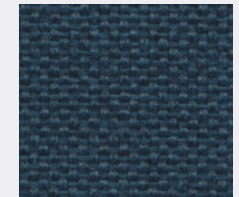
36091



38011



37022



36034

## SPECIFICATIONS

**UK MATERIAL**  
100% TREVIRA CS®

**WEIGHT / WIDTH**  
APPROX. 280 G/M2 / APPROX. 140 CM

**ABRASION RESISTANCE**  
80.000 MARTINDALE (ISO 12947/2)

**FLAME RETARDENCY**  
1 IM (UNI 9175) / AM 18 (NF D 60013)  
B1 (DIN 4102) / BS 7176 MEDIUM HAZARD  
C1 / CALIFORNIA TB 117 / CRIB 5  
EN 1021/1-2 / IMO PART 8 / M1  
ONORM B 3825-A 3800-1 CLAS B1-Q-1-TR1

**FASTNESS TO LIGHT**  
6 (ISO 105-B02)

**FASTNESS TO RUBBING/ PILING**  
4-5 (ISO 105-X12) / 5 (ISO 12945-2)

**NL MATERIAAL**  
100% TREVIRA CS®

**GEWICHT / BREEDTE**  
CA. 280 G/M2 / CA. 140 CM

**SLIJTWEERSTAND**  
80.000 MARTINDALE (ISO 12947/2)

**BRANDVEILIGHEID**  
1 IM (UNI 9175) / AM 18 (NF D 60013)  
B1 (DIN 4102) / BS 7176 MEDIUM HAZARD  
C1 / CALIFORNIA TB 117 / CRIB 5  
EN 1021/1-2 / IMO PART 8 / M1  
ONORM B 3825-A 3800-1 CLAS B1-Q-1-TR1

**LICHTECHTHEID**  
6 (ISO 105-B02)

**WRIJFECHTHEID / PILING**  
4-5 (ISO 105-X12) / 5 (ISO 12945-2)

**DE MATERIAL**  
100% TREVIRA CS®

**GEWICHT / BREITE**  
CA. 280 G/M2 / CA. 140 CM

**SCHEUERFESTIGKEIT**  
80.000 MARTINDALE (ISO 12947/2)

**BRANDVERHALTEN**  
1 IM (UNI 9175) / AM 18 (NF D 60013)  
B1 (DIN 4102) / BS 7176 MEDIUM HAZARD  
C1 / CALIFORNIA TB 117 / CRIB 5  
EN 1021/1-2 / IMO PART 8 / M1  
ONORM B 3825-A 3800-1 CLAS B1-Q-1-TR1

**LICHTECHTHEIT**  
6 (ISO 105-B02)

**REIBECHTHEID / PILING**  
4-5 (ISO 105-X12) / 5 (ISO 12945-2)

**FR MATÉRIAU**  
100% TREVIRA CS®

**POIDS / LARGEUR**  
CA. 280 G/M2 / CA. 140 CM

**SOLIDITÉ À LA LUMIÈRE UNI**  
80.000 MARTINDALE (ISO 12947/2)

**NON FEU**  
1 IM (UNI 9175) / AM 18 (NF D 60013)  
B1 (DIN 4102) / BS 7176 MEDIUM HAZARD  
C1 / CALIFORNIA TB 117 / CRIB 5  
EN 1021/1-2 / IMO PART 8 / M1  
ONORM B 3825-A 3800-1 CLAS B1-Q-1-TR1

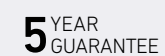
**SOLIDITÉ LUMIÈRE**  
6 (ISO 105-B02)

**RÉSISTANCE AU FROTTEMENT / PILING**  
4-5 (ISO 105-X12) / 5 (ISO 12945-2)

## SAMPLE SERVICE

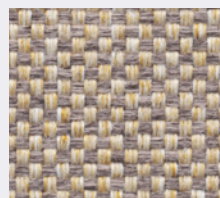
The colours in this publication may differ to the original product. We recommend requesting a product sample.

Sample service and further information:  
[www.casala.com/samples](http://www.casala.com/samples)

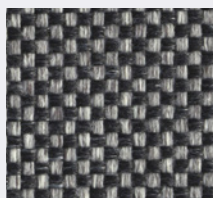


# GEORGIA

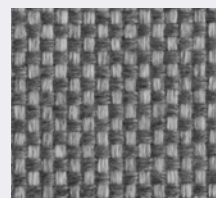
FABRIC BAND 4



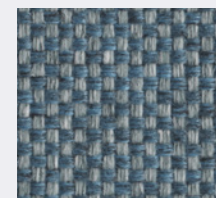
49108



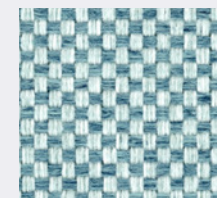
49803



49820



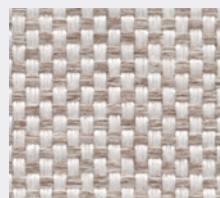
49605



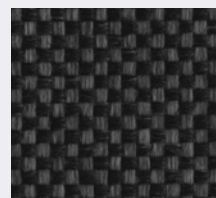
49616



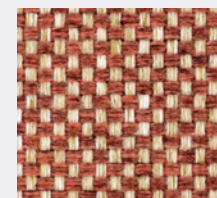
49102



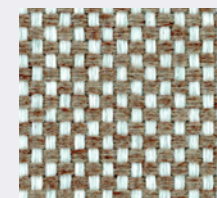
49107



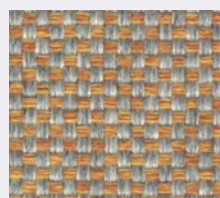
49804



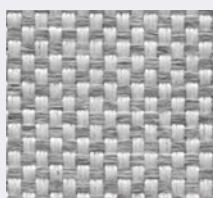
49322



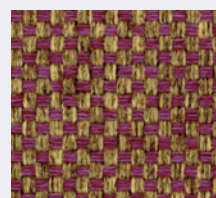
49206



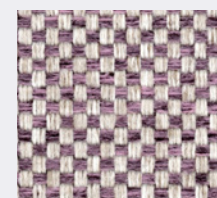
49309



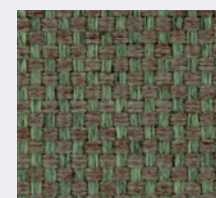
49109



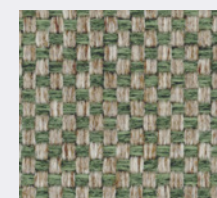
49305



49105



49227



49217

## SPECIFICATIONS

**UK MATERIAL**  
100% TREVIRA CS®

**WEIGHT / WIDTH**  
APPROX. 400 G/M2 / APPROX. 150 CM

**ABRASION RESISTANCE**  
75.000 MARTINDALE (ISO 12947/2)

**FLAME RETARDENCY**  
B1 / M1 / CRIB 5 / EN 1021/1-2  
IMO RES. A 652 (16) PART 8  
BS 7176 MEDIUM HAZARD  
NF D 60013 CLASS AM 18

**FASTNESS TO LIGHT**  
6 (ISO 105-B02)

**FASTNESS TO RUBBING / PILLING**  
4-5 (ISO 105-X12) / 5 (ISO 12945-2)

**NL MATERIAAL**  
100% TREVIRA CS®

**GEWICHT / BREEDTE**  
CA. 400 G/M2 / CA. 150 CM

**SLIJTWEERSTAND**  
75.000 MARTINDALE (ISO 12947/2)

**BRANDVEILIGHEID**  
B1 / M1 / CRIB 5 / EN 1021/1-2  
IMO RES. A 652 (16) PART 8  
BS 7176 MEDIUM HAZARD  
NF D 60013 CLASS AM 18

**LICHTECHTHEID**  
6 (ISO 105-B02)

**WRIJFECHTHEID / PILLING**  
4-5 (ISO 105-X12) / 5 (ISO 12945-2)

**DE MATERIAL**  
100% TREVIRA CS®

**GEWICHT / BREITE**  
CA. 400 G/M2 / CA. 150 CM

**SCHEUERFESTIGKEIT**  
75.000 MARTINDALE (ISO 12947/2)

**BRANDVERHALTEN**  
B1 / M1 / CRIB 5 / EN 1021/1-2  
IMO RES. A 652 (16) PART 8  
BS 7176 MEDIUM HAZARD  
NF D 60013 CLASS AM 18

**LICHTECHTHEIT**  
6 (ISO 105-B02)

**REIBECHTHEID / PILLING**  
4-5 (ISO 105-X12) / 5 (ISO 12945-2)

**FR MATÉRIAU**  
100% TREVIRA CS®

**POIDS / LARGEUR**  
CA. 400 G/M2 / CA. 150 CM

**SOLIDITÉ À LA LUMIÈRE**  
75.000 MARTINDALE (ISO 12947/2)

**NON FEU**  
B1 / M1 / CRIB 5 / EN 1021/1-2  
IMO RES. A 652 (16) PART 8  
BS 7176 MEDIUM HAZARD  
NF D 60013 CLASS AM 18

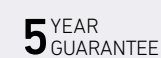
**SOLIDITÉ LUMIÈRE**  
6 (ISO 105-B02)

**RÉSISTANCE AU FROTTEMENT / PILING**  
4-5 (ISO 105-X12) / 5 (ISO 12945-2)

## SAMPLE SERVICE

The colours in this publication may differ to the original product. We recommend requesting a product sample.

Sample service and further information:  
[www.casala.com/samples](http://www.casala.com/samples)



**casala**

[www.casala.com](http://www.casala.com)